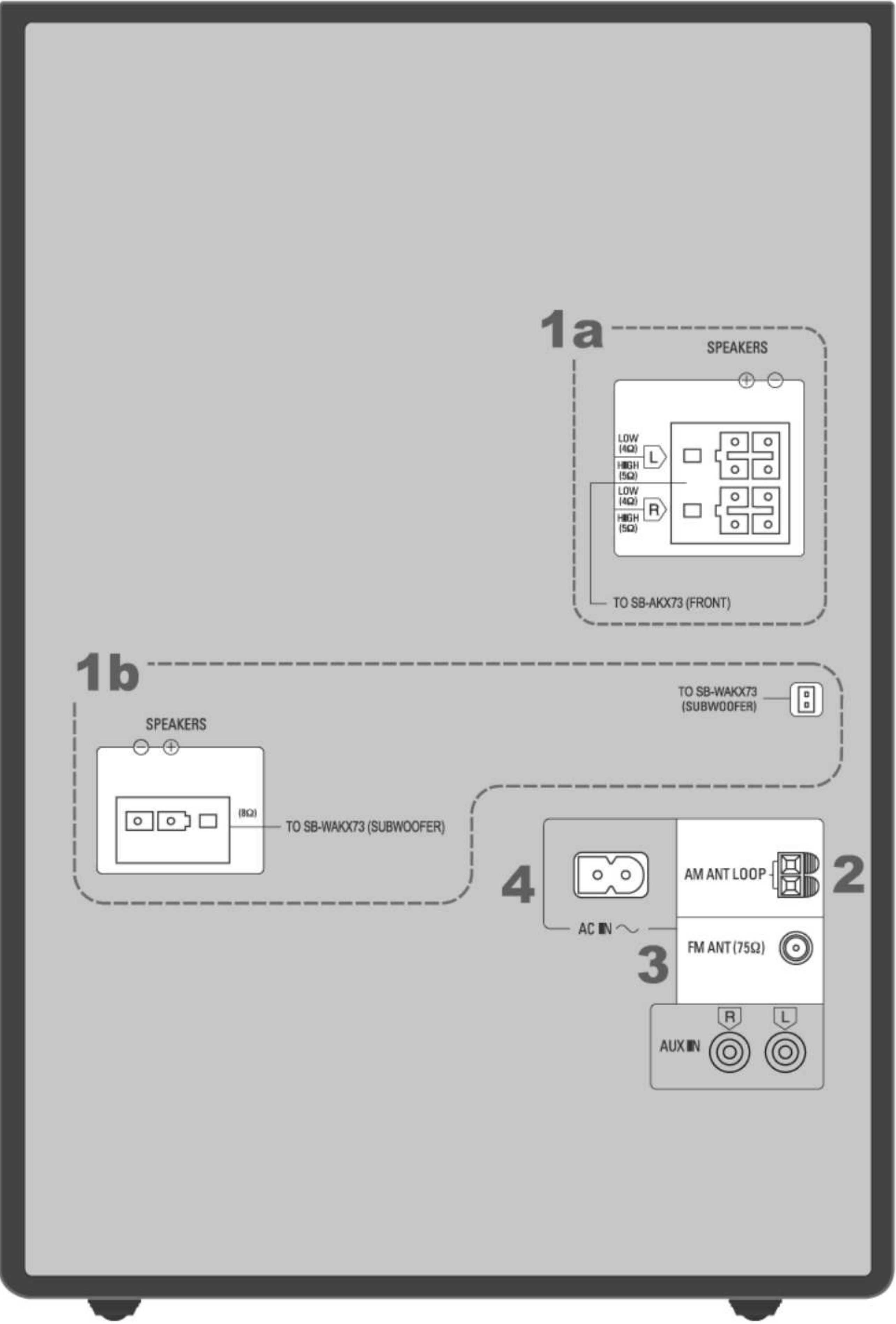


7 Installation Instructions

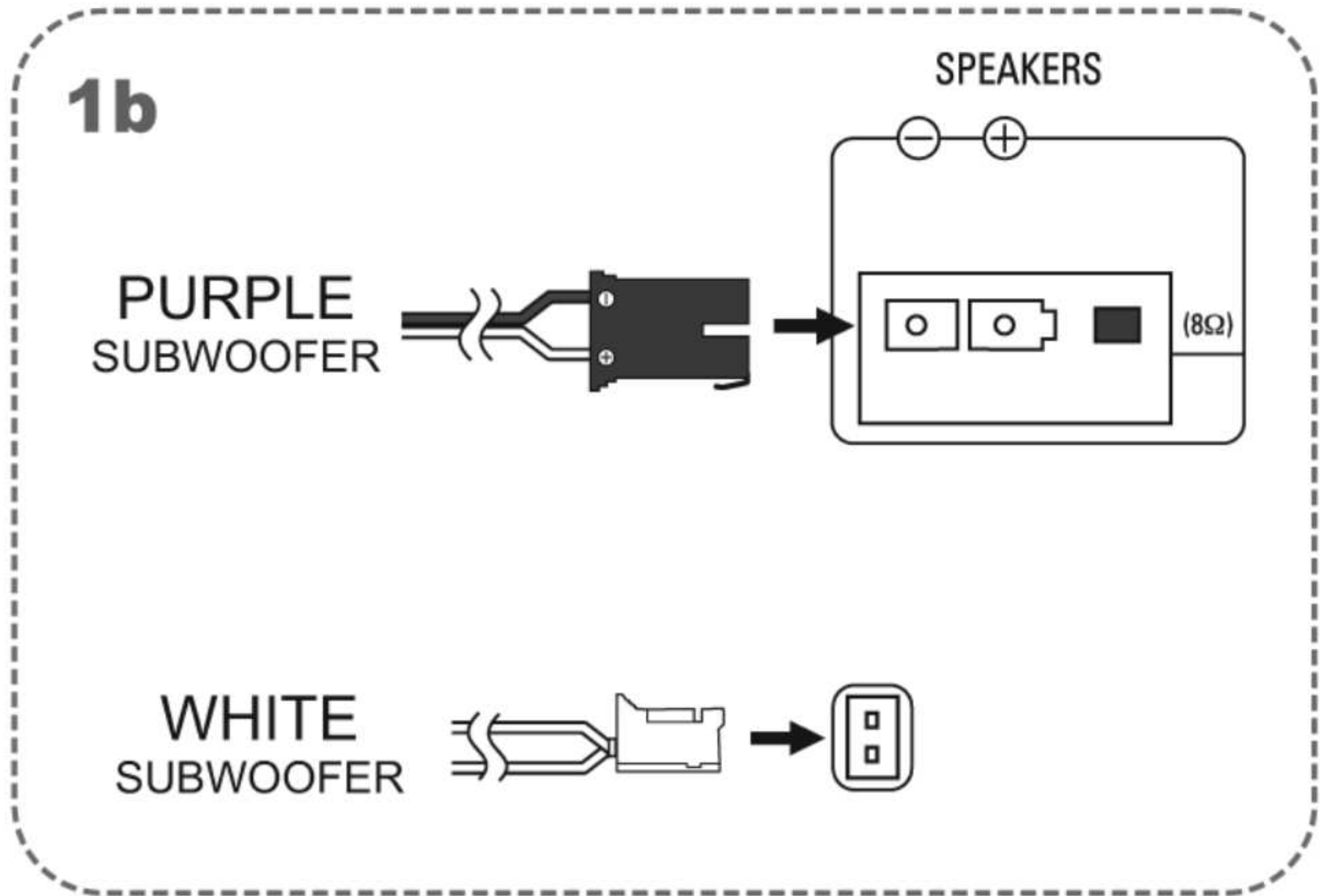
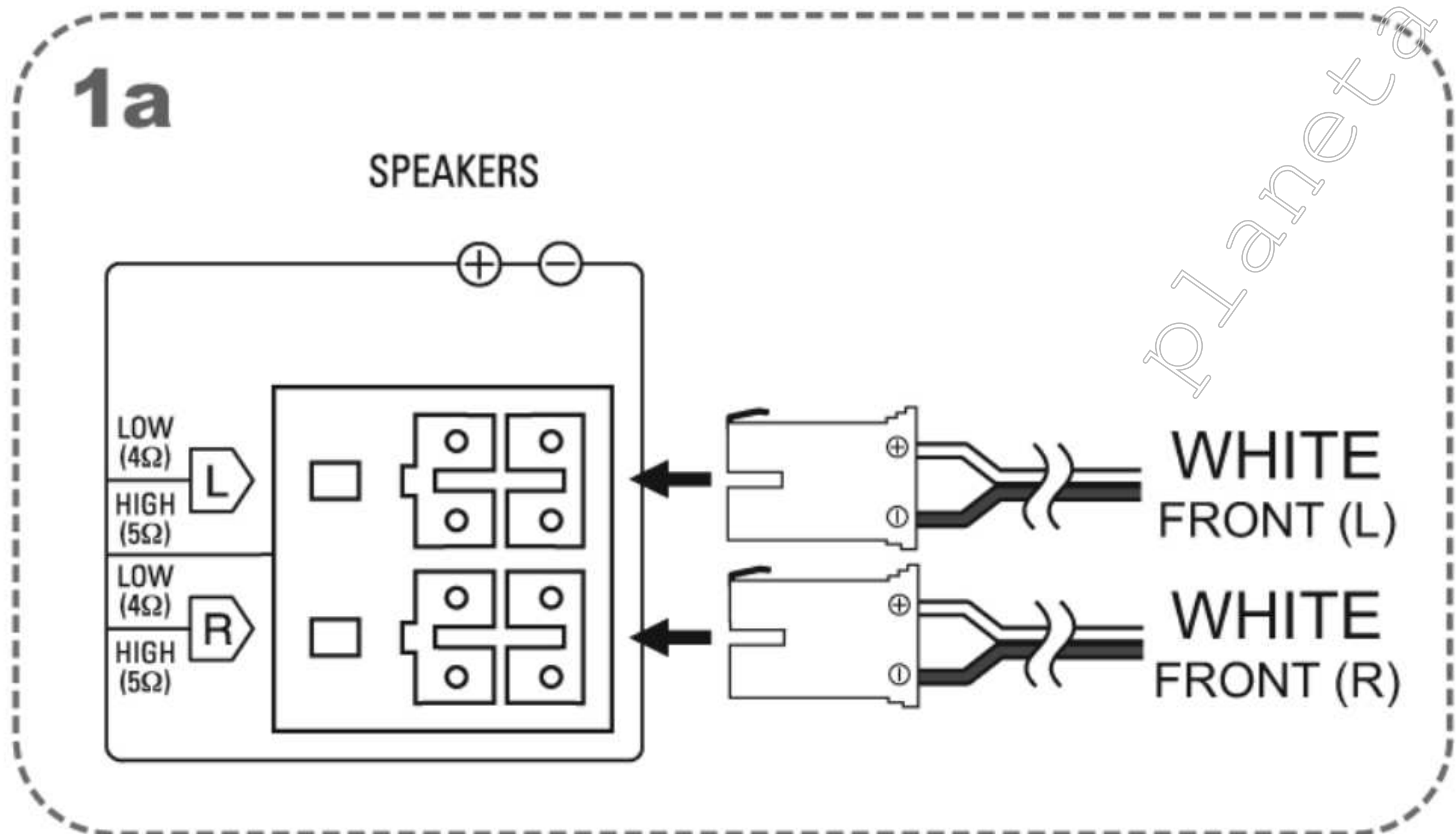
7.1. Speaker and A/C Connection

Making the connections

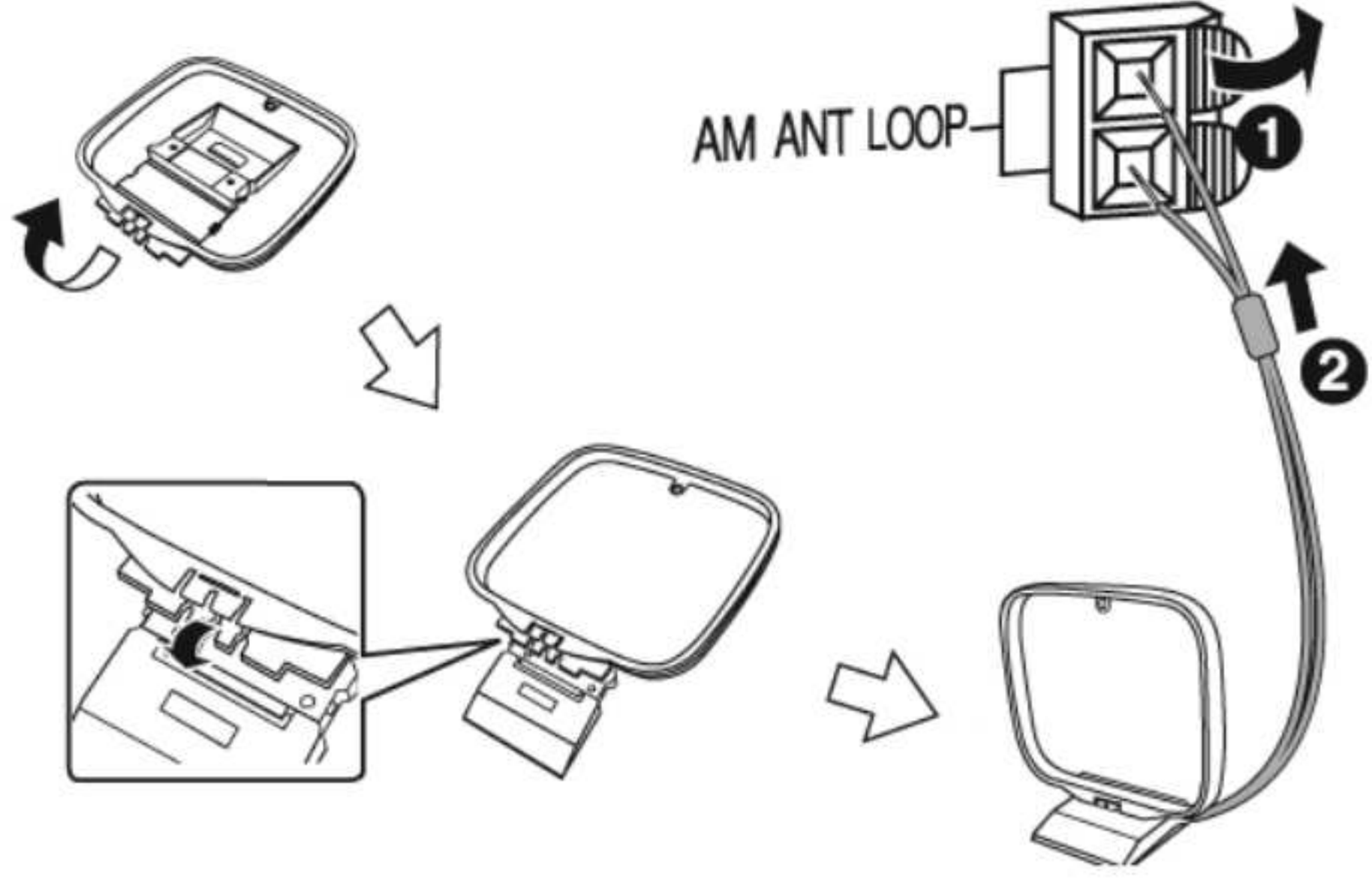
Connect the AC power supply cord only after all the other connections have been made.



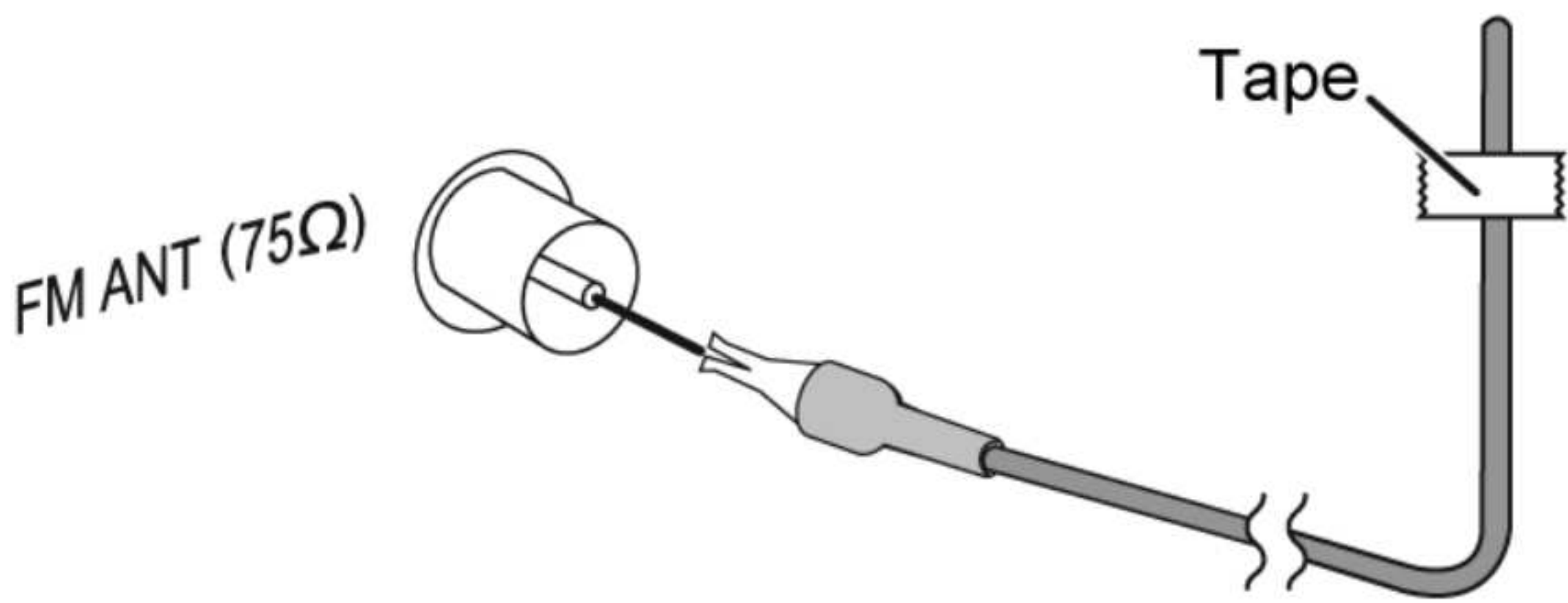
- 1 Connect the speakers and subwoofer.**
Connect the speaker cables to the terminals of the same color.



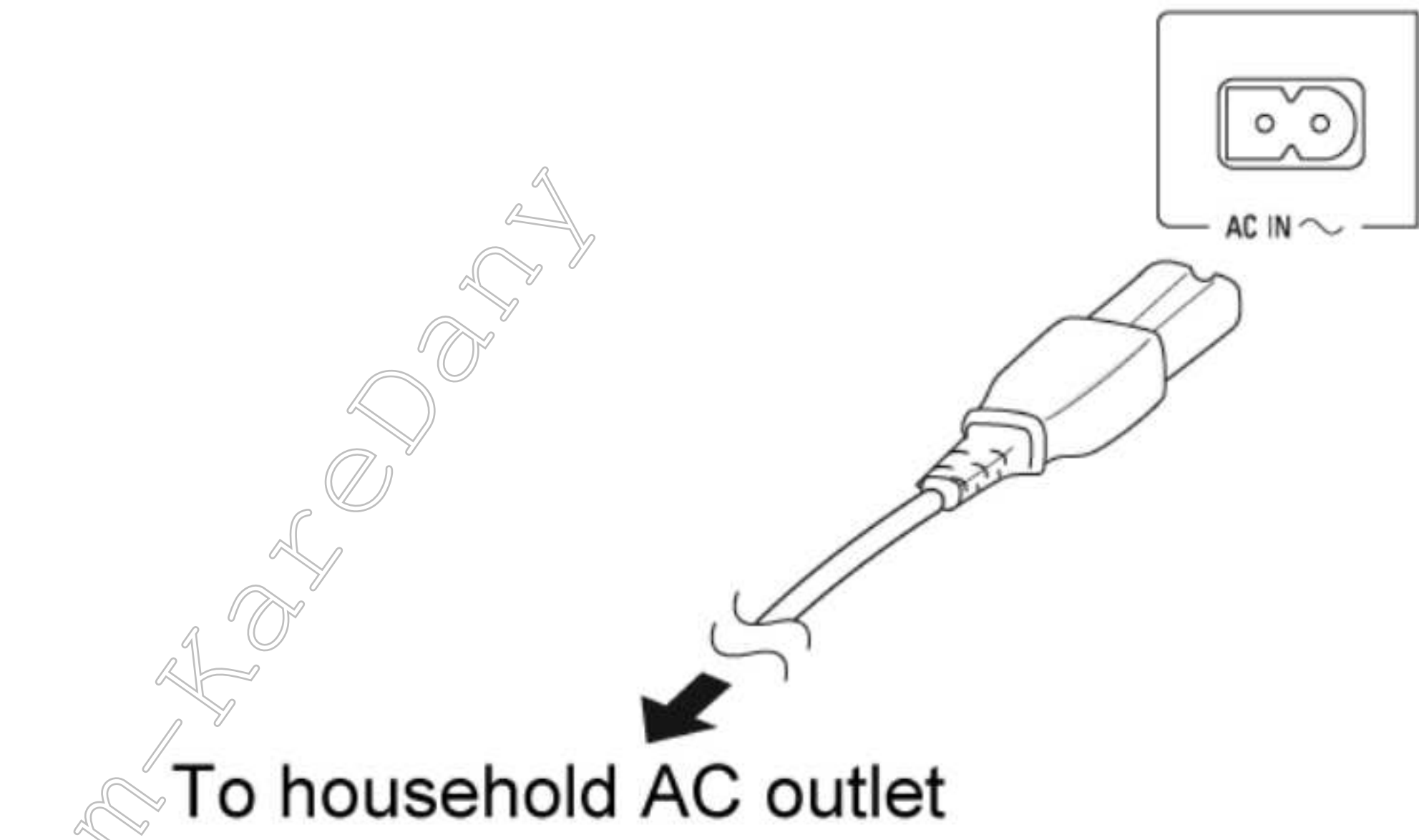
- 2 Connect the AM loop antenna.**
Stand the antenna up on its base until it clicks.



- 3 Connect the FM indoor antenna.**
Place the antenna where reception is best.



- 4 Connect the AC power supply cord.**



Do not use an AC power supply cord from other equipment.

Conserving power

The system consumes approximately 0.2 W when it is in standby mode. Disconnect the power supply if you do not use the system.

Some settings will be lost after you disconnect the system. You have to set them again.